

These questions are multiple-choice questions that ask you to select only **one** answer choice from a list of four choices. Each correct answer gives you one point.

BIOLOGY

- 1 The process that actively moves substances from the blood into the nephron is
 - A tubular reabsorption
 - B tubular filtration
 - C tubular secretion
 - D osmosis

- 2 The order in which impulses travel through the heart is
 - A bundle of His, Purkinje fibers, sinoatrial node, AV node
 - B Purkinje fibers, bundle of His, AV node, sinoatrial node
 - C sinoatrial node, atrioventricular node, bundle of His, Purkinje fibers
 - D atrioventricular node, bundle of His, sinoatrial node, Purkinje fibers

- 3 Inflammation does **NOT** include:
 - A heat
 - B paleness
 - C pain
 - D swelling

- 4 Which of the following keeps blood pH relatively constant?
 - A hemoglobin
 - B changes in the rate and depth of breathing
 - C the carbonic acid-bicarbonate buffer system
 - D All of the answers are correct

- 5 Indicate correct statement about somatic nervous system :
 - A is involuntary
 - B controls glands
 - C controls skeletal muscle
 - D controls cardiac muscle

- 6 Which of the following is a mineral?
 - A folate
 - B biotin
 - C cobalt
 - D calciferol

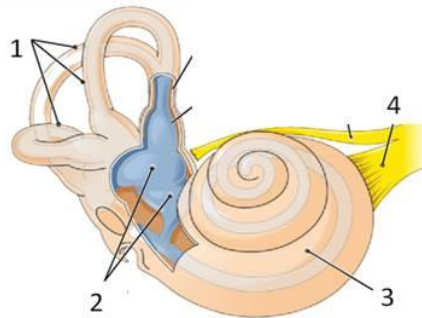
- 7 Which of following is **NOT** the action of insulin:
 - A decreases the blood sugar level

- B increases glucose conversion to fat
- C increases the blood sugar level
- D increases glucose conversion to glycogen

8 The protein that makes up a major component of bone matrix is:

- A keratin
- B collagen
- C melanin
- D calcium

9 In which part of the inner ear the spiral organ (of Corti) is located?



- A 1
- B 2
- C 3
- D 4

10 The last divisions of the bronchial tree that supply the alveoli with air are:

- A bronchioles
- B main stem bronchi
- C segmental bronchi
- D lobar bronchi